



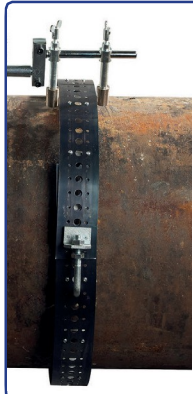
E-Z PIPECUT MAGNETIC

Electric Driven Magnetic portable oxy-fuel cutting machine

TAG's E-Z Pipecut portable oxy-fuel cutting machine and bevelling machines are the economical solution for cutting and bevelling pipe from 350mm upwards. The E-Z Pipecut portable oxy-fuel cutting machine is small and compact, strong and reliable, used by contractors, welders and pipe fitters, equally at home on site or in the workshop.

Two sets of magnetic, electrically driven roller wheels are housed inside the body of the TAG E-Z Pipecut Magnetic portable oxy-fuel cutting machine, these rollers (offering a magnetic absorbability force of over 50kg) ensure the machine stays in contact with the pipe as it travels around the circumference, cutting and bevelling as it goes.

The TAG E-Z Pipecut Magnetic Machine is rugged yet lightweight, so ideal for general use on the job site, or in the workshop.



Guide Band

For guaranteed square cuts and bevels on pipe diameters larger than 600mm we recommend the selection of the optional guide band system to suit the relevant pipe size(s).



TECHNICAL SPECIFICATION

Part No	EZPCMA1: 110v EZPCMA2: 220v
Power Supply	110v / 220v
Pipe Diameter	350mm upwards
Wall Thickness	5 - 50mm
Torch	Universal nozzle-mix torch suitable for all nozzle-mix cutting nozzle
Cut/Bevel Angle	Variable up to 45 Degree
Vertical Torch +/-	50mm
Lateral Torch +/-	100mm
Track Width	50 - 780mm/min
Weight	20kg / 18.7lbs
Dimensions	350(l) x 310(w) x 280 (h)mm

Scope of Delivery

- Pipe cutting machine E-Z Pipecut Magnetic
- Universal nozzle-mix torch suitable for all nozzle-mix cutting nozzle
- Gas hoses
- Power cable
- Cutting nozzle (5 - 30mm material thickness)
- Operation Instructions



ARC-TECH®
Sol. Ind. y Soldadura 2008, S.L.U.
C/ Río Tajo, Nave 1
Santa Olalla 45530 - TOLEDO
Tel. +34 925 797 688 - FAX +34 925 797 064

